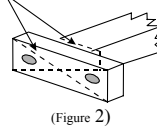


Hand Tool Rack Instructions

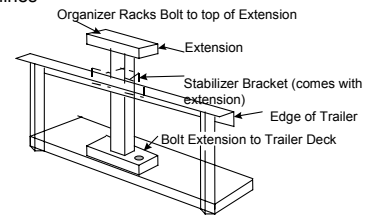
Mounting on open Trailers:

1. Drill 3/8 mounting holes directly over an upright support and bolt the rack on.
2. If the sides of your trailer aren't strong enough use an extension & support off the floor. (Figure 1)

Cut vinyl as shown by dotted lines



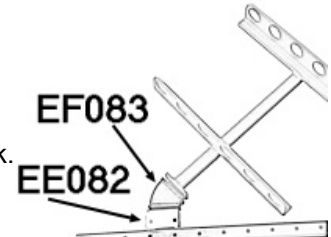
(Figure 2)



Mounting on trailers with round & angle sides. Extensions can be used to ensure stable (Figure 1)

Mounting to Utility Vehicles:

1. Attach one of the Bed Rail bracket set (Part #EE082) to the bottom of the Hand Tool Rack.
 - a. Optional 45° bracket (Part #EF083) will be attached to the base of the rack.
 - b. Attach the Bed Rail to the base of the 45° bracket (Part #EF083)
2. Attach the Bed Rail Bracket to the Bed Rail.



Required Tools: (2) 9/16" wrenches or (2) 14mm wrenches.

Warning All Green Touch Locks are Keyed alike!!

Customer Service: (800) 621-6919

www.greentouch.com