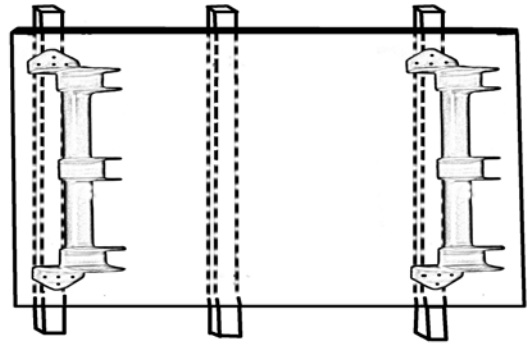


# **Enclosed Line Trimmer Rack Instructions**

## **Mounting Instructions**

1. The Line Trimmer Racks should be spaced out approximately 32 inches apart.
2. If the plywood in your trailer is thinner than  $\frac{1}{2}$  inch, then it is imperative that you secure these racks to the steel supports.
3. Using the self-drilling, self-tapping screws provided screw directly through the plywood & into the steel support.
4. If you have minimum  $\frac{1}{2}$  inch plywood, you do not have to hit the supports but you must use all 8 holes to secure the rack to the wall.



**Customer Service: (800) 621-6919**

**[www.green-touch.com](http://www.green-touch.com)**